

# V TECHNOLOGY

*The Clear Choice for Those Who Want It All*

Introducing the SOLJET PRO II V series, Roland's latest innovation in advanced printers and integrated printer/cutters. With the advent of V Technology, Roland has re-engineered its award winning SOLJET wide-format line to be better than ever. V Technology adds up to the ultimate standard for printing, cutting, ink, media and RIP technology, and makes the SOLJET PRO II V series ideal for all advanced wide-format applications.



Specifications	SJ-1045IS	SJ-745EX	SJ-645EX	
Printing method		Piezo Inkjet method		
Acceptable media widths	While the print heater is running	500 to 1879 mm (19-1/16 to 74 in.)	500 to 1625 mm (19-1/16 to 64 in.)	
	While the print heater is not running	1220 to 2641 mm (48 to 104 in.)	210 to 1879 mm (8-5/16 to 74 in.)	210 to 1625 mm (8-5/16 to 64 in.)
Printing width	Maximum 2600 mm (102.3 in.)	Maximum 1869 mm (73-9/16 in.)	Maximum 1615 mm (63-9/16 in.)	
Ink cartridges	Type	Exclusive ECO-SOL MAX cartridge		
	Capacity	220 cc or 440 cc		
	Colors	4 colors (cyan, magenta, yellow, and black) or 6 colors (cyan, magenta, yellow, black, light cyan, and light magenta)		
Printing resolution (Printing dot resolution)		Maximum 1440 dpi		
Distance accuracy (when printing) *1*2		Error of less than ±0.3 % of distance traveled, or 0.3 mm, whichever is greater		
Media take-up system	Roll outer diameter	Maximum 250 mm (9.8 in.)	Optional (180 mm (7-1/16 in.)) *3	
	Roll weight	Maximum 100 kg (220 lb.)	Optional (20 kg (44 lb.)) *3	
Media feed system	Roll outer diameter	Maximum 250 mm (9.8 in.)		
	Roll weight	Maximum 100 kg (220 lb.)		
Heater	Preheater and print heater, setting range for the preset temperature: 35 to 50 °C (96 to 122 °F); and post heater, setting range for the preset temperature: 30 to 50 °C		Print heater, setting range for the preset temperature: 35 to 50 °C (96 to 122 °F) *4	
Interface	Ethernet (10BASE-T/100BASE-TX, automatic switching)			
Power-saving function	Automatic sleep feature			
Power supply	Voltage and frequency	AC 200 to 240 V ±10 %, 50/60 Hz	AC 117 V ±10 %, 50/60 Hz or AC 220 to 240 V ±10 %, 50/60 Hz	
	Required power capacity	10 A	6.5 A (117 V) or 3.3 A (220 to 240 V)	
Power consumption	During operation	Approx. 2400 W	Approx. 770 W	Approx. 640 W
	Sleep mode		Approx. 55 W	
Acoustic noise level	During operation		65 dB (A) or less (according to ISO 7779)	
	During standby		40 dB (A) or less (according to ISO 7779)	
Dimensions (With stand)	3894 (W) x 1159 (D) x 1394 (H) mm (153.4 (W) x 45.7 (D) x 54.9 (H) in.)	3134 (W) x 742 (D) x 1300 (H) mm (123-7/16 (W) x 29-1/4 (D) x 51-3/16 (H) in.)	2953 (W) x 742 (D) x 1300 (H) mm (116-5/16 (W) x 29-1/4 (D) x 51-3/16 (H) in.)	
Weight (With stand)	455 kg (1003 lb.)	174 kg (384 lb.)	170 kg (375 lb.)	
Environment	Power on	Temperature: 20 to 32 °C (68 to 89.6 °F), humidity: 35 to 80 % (no condensation)	Temperature: 15 to 32 °C (59 to 89.6 °F) (20 °C (68 °F) or more recommended), humidity: 35 to 80 % (no condensation)	
	Power off	Temperature: 5 to 40 °C (41 to 104 °F), humidity: 20 to 80 % (no condensation)	Temperature: 5 to 40 °C (41 to 104 °F), humidity: 20 to 80 % (no condensation)	
Included items	Power cord, roll shafts, end caps, spacers, media reinforcement pipe, paper pipe, drain bottle, media gauge, media clamps, hexagonal wrenches, cap-unit tool, cleaning kit, cleaning liquid cartridges, software RIP, Roland-PrintServer CD-ROM, User's Manual, Setup Guide, Roland-PrintServer Network Settings Guide	Power cord, stand, hexagonal wrench, pipe, media flanges, flange retaining pins, drain bottle, bottle stand, transport bars, media reinforcement pipe, software RIP, user's manual, replacement blades for separating knife, Roland-PrintServer CD-ROM, Roland-PrintServer Network Settings Guide, SOL INK cleaning cartridges, cleaning kit (cleaning sticks, tweezers, wipers)		

\*1 Using Roland specified media, print travel of 1m, preset temperature of 25 °C (77 °F), humidity of 50% \*2 Not assured when the print heater is used. \*3 Automatic rolling function can only be used during printing. \*4 The print heater temperature may not reach the preset temperature depending on ambient conditions or the width of the media. Unevenness in temperature may be larger depending on ambient conditions or the width of the media.

IS-1000 High Capacity Ink Delivery System	
Cartridge slots	24
Ink	Type
	Colors
Power supply	AC adapter, Input: AC 100 V ±10 % 50/60 Hz, 1.7 A, Output: DC 24 V 2.8 A
Power consumption	Approx. 35 W
Dimensions	732 (W) x 445 (D) x 433 (H) mm (28-7/8 (W) x 17-9/16 (D) x 17-1/16 (H) in.) (excluding the stay)
Weight	46 kg (102 lb.)
Environment	Power on
	Power off
Included items	Dedicated AC adapter, power cord, and User's Manual

Roland VersaWorks System Requirements	
Operating system	Windows XP ServicePack 1 or later or Windows 2000 Service Pack 4 or later
CPU	Computer with Pentium 4 2.0 GHz or faster recommended
RAM	1 GB or more recommended
Free hard-disk space	40 GB or more recommended

Options		
ECO-SOL MEDIA	SPVCB-1270	PVC banner, 1270 mm x 20 m (50' x 65')
	SVB-B-1270	PVC banner, blackout, 1270 mm x 20 m (50' x 65')
	SP-M-1270	Matte PET film, 1270 mm x 30 m (50' x 98')
	SFPLF-1300	Backlit film, 1300 mm x 30 m (51'-1/8" x 98')
	SCM-GBMW-50-1180	Polyethylene banner, 1180 mm x 50 m (46'-7/16" x 164')
	SCM-GPPG-50-914	White glossy photo paper, 914 mm x 50 m (36' x 164')
	SCM-GPPG-50-1270	White glossy photo paper, 1270 mm x 50 m (50' x 164')
	SCM-GVWG-40-1370	Monomeric calendared self adhesive vinyl white glossy-permanent adhesive, 1370 mm x 40 m (53'-7/8" x 131')
	SCM-GVWG-40-1525	Monomeric calendared self adhesive vinyl white glossy-permanent adhesive, 1525 mm x 40 m (60' x 131')
	ECO-SOL MAX	ESL3-4MG
ESL3-4YE		Yellow, 440 cc
ESL3-4CY		Cyan, 440 cc
ESL3-4BK		Black, 440 cc
ESL3-4LC		Light Cyan, 440 cc
ESL3-4LM		Light Magenta, 440 cc
ESL3-4MG		Magenta, 220 cc
ESL3-4YE		Yellow, 220 cc
ESL3-4CY		Cyan, 220 cc
ESL3-4BK		Black, 220 cc
Cleaning liquid	SL-CL	1 pc.
	TU-750	For SJ-745EX
	TU-650	For SJ-645EX

### ISO 14001 and ISO 9001:2000 Certified

Roland pursues both environmental protection and continuous quality improvement. Under the philosophy of preserving the environment and human health, Roland DG is actively working to abolish organic solvents in production, to reduce and recycle waste, to reduce power use, and to purchase recycled products. Roland DG constantly strives to provide the most highly reliable products available.



Roland reserves the right to make changes in specifications, materials or accessories without notice. Your actual output may vary. For optimum output quality, periodic maintenance to critical components may be required. Please contact your Roland dealer for details. No guarantee or warranty is implied other than expressly stated. Roland shall not be liable for any incidental or consequential damages, whether foreseeable or not, caused by defects in such products. PostScript is a trademark of Adobe Systems Incorporated. All other trademarks are the property of their respective owners.



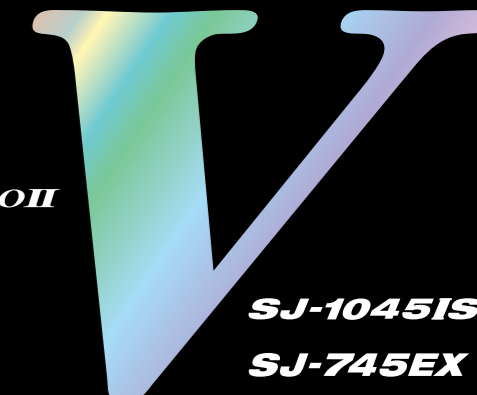
**AUTHORIZED DEALER:**

Printed in Japan. RDG-90320 '06 JUL C-3 G-S

[www.rolanddg.com](http://www.rolanddg.com)



**SOLJET PRO II**  
Sign Maker by Roland DG Corporation



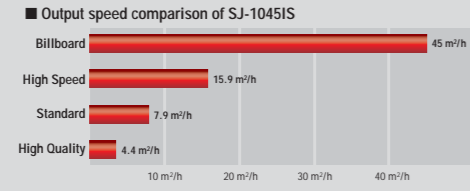
**SJ-1045IS**  
**SJ-745EX**  
**SJ-645EX**

### The Choice for Speed

First and foremost, V Technology is fast to meet the demanding requirements for banners and other advanced wide-format applications. In fact, V Technology brings to the PRO II V line an impressive 60% increase in speed when printing in the newly added 720 x 720 dpi print mode. This new print mode ensures the highest standards for precision while throughput remains quick and efficient. All of which adds up to better image quality and increased overall productivity for your business.

### The Choice for Quality

V Technology continues to produce high quality even at high speeds. In 360 x 360 dpi Billboard print mode, the SJ-1045IS will print a 103"-wide banner in 4-color CMYK at up to 45m<sup>2</sup>/h (484 sqft/h). Primary colors remain crisp and vivid. Photos and illustrations retain their sharpness.



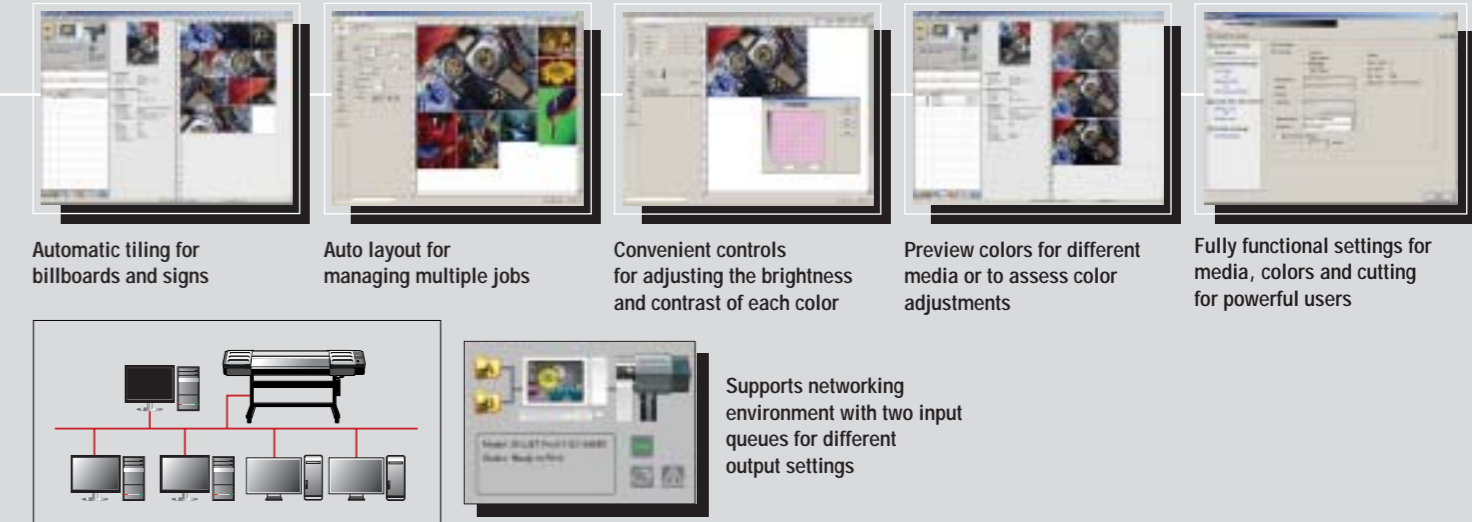
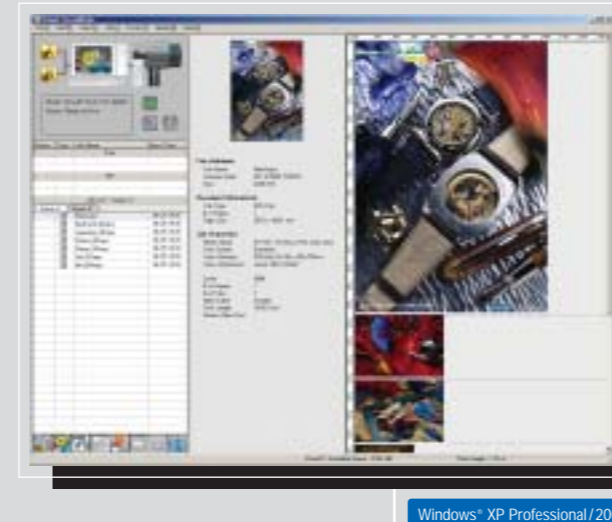
### The Choice for Unmatched Artistic Reproduction

V Technology is precise. A new 1440 x 1440 dpi Artistic print mode makes the PRO II V ideal for large reproductions of artwork and photographs. This new mode allows you to maximize Roland's acclaimed printing technology, which uses Piezo print heads and digital servomotors to precisely control droplet placement in both the print head travel and paper feed directions.



### Roland VersaWorks® — The Number One Choice for Top Professionals

V Technology features Roland VersaWorks, powerful and comprehensive software RIP designed by Roland to take full advantage of the company's award-winning inkjet technology. With advanced features including profiles for both low-priced uncoated media and quality Roland Certified ECO-SOL MAX media, VersaWorks ensures optimum performance to meet your customer's every demand. The VersaWorks Media Explorer allows you to customize settings to manage media, colors and cut paths for your SOLJET PROII V inkjet. VersaWorks is compatible with genuine Adobe® PostScript® 3™, ensuring smooth and natural gradations with 12-bit image processing to prevent tone shifts. An automatic online update feature delivers the latest VersaWorks version and profiles directly to your computer. VersaWorks is compatible with Windows XP Professional and 2000.



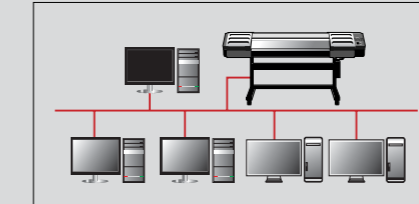
Automatic tiling for billboards and signs

Auto layout for managing multiple jobs

Convenient controls for adjusting the brightness and contrast of each color

Preview colors for different media or to assess color adjustments

Fully functional settings for media, colors and cutting for powerful users



Supports networking environment with two input queues for different output settings



# SOLJET PROII V

Sign Maker by Roland DG Corporation



### ECO-SOL MAX INK — The Choice for Versatile, Scratch-Resistant Performance

ECO-SOL MAX features significant new enhancements including faster drying time, improved scratch resistance, higher density, wider color gamut and performance with both coated and uncoated substrates including 150 types of low-cost uncoated media. Low-maintenance ECO-SOL MAX is virtually odorless, and does not require any special ventilation or environmental equipment. Choose ECO-SOL MAX for crisp graphics that last up to three years outdoors without lamination.\*



### The Choice for Flexibility

When it comes to media, V Technology delivers the flexibility you need for optimum performance and cost efficiency. Choose from commercially available uncoated media for excellent print quality at lower production costs. Or select Roland's genuine ECO-SOL Media for the very finest print quality, available for both outdoor and indoor applications. More than 100 ready-to-use printing profiles are available through [www.rolanddg.com](http://www.rolanddg.com) to ensure pleasing results with minimum effort.

### The Choice for Increased Productivity

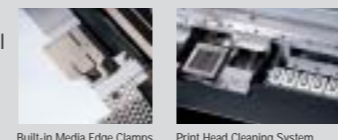
The SOLJET PRO II V Series features a powerful built-in heating system equipped with three components: a pre heater, print heater and dryer.\* When used with ECO-SOL MAX ink, this unique system offers many benefits including superior ink bonding, accelerated drying time and more vivid colors for outstanding print quality. Build your business with exceptional SOLJET performance.

\*For the SJ-745EX and SJ-645EX, the heating system includes a pre heater and a print heater.

### The Choice for Optimum Results

The PRO II V line includes a full range of additional hardware features designed to maximize performance:

- The SJ-1045IS includes the new IS-1000 high capacity ink delivery system with a total ink volume of over 10 liters and a heavy-duty media handling system.
- A newly added 3-level lever enables you to adjust print head height to accommodate media thickness ranging from canvas or banner material to fine films.
- Built-in media edge clamps prevent print defects due to media curling.
- A sheet cutter makes trimming media as easy as pushing a button.
- A media counter allows you to record and track the amount of media remaining on a roll and print this information on the media itself.
- The print head cleaning system keeps print heads in top condition for long-term use.



**SJ-1045IS**  
● 104" 6-color CMYK/LcM or 4-color CMYK printer with IS-1000 high capacity ink delivery system



**SJ-745EX**  
● 74" 6-color CMYK + LcM or 4-color CMYK printer



**SJ-645EX**  
● 64" 6-color CMYK + LcM or 4-color CMYK printer

\*Three years outdoor durability is based on accelerated weather tests conducted by Roland DG. Results may vary depending upon location and application.